



# KIP 2300

HIGH PRODUCTION CCD SCAN SYSTEM



# KIP 2300 CCD SCANNING SYSTEM

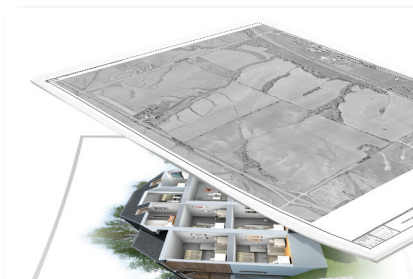
## High Production Scan System

The new KIP 2300 high productivity scanner sets a uniquely high standard for speed, quality and flexibility in a digital image capture system.

Best in class productivity is achieved by a combination of advanced camera based image capture and Super-Speed USB3s Technology for high speed data throughput with no system pauses or slow downs.

Outstanding image quality is delivered through the innovative use of bright white LED light sources for illumination and 600 x 600 dpi image capture resolution.

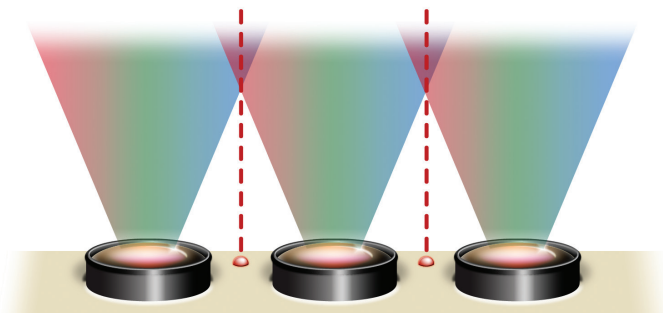
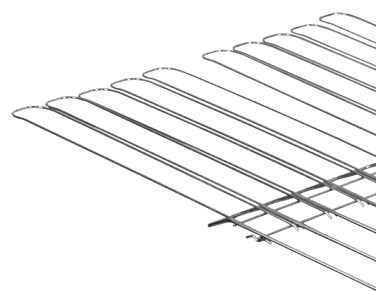
The KIP 2300 is a high speed scan solution that provides world-class workflow flexibility through its ability to scan face up or face down and scan thick mounted originals and loose sheets of paper from a single unit.



## Versatile Camera Imaging

The KIP 2300 Color Scanner Solution can support both monochrome and color scan-to-file and copy to satisfy most application needs. When scanning to file, users have advanced software controls over image quality; when copying.

The KIP 2300 scanner is powerful, with image capture speeds from 5 ips to 12 ips in monochrome (dependent on dpi) and 2 to 6 ips in color. The image capture area is up to 36 in. wide, yet originals up to 42 in. wide may be fed through the scanner.



*Three independent imaging cameras with an advanced laser alignment system and self calibrating diagnostics provide an extraordinary level of quality.*



## **Super-Speed USB3** TECHNOLOGY

- **Faster than any other competing image transfer technology**
- **10 times faster than USB 2.0!**
- **Scan documents at full speed and full resolution**
- **No scanning pauses or slow downs**

### **Flexible Scan System**

600 dpi optical resolutions is the key to the KIP 2300 Color Scanner's outstanding imaging capabilities. In addition, the KIP 2300 Color Scanner takes full advantage of patented (Real Time Thresholding) and self calibrating imaging cameras to ensure high quality results.

To optimize image size for intended use, users can select custom resolutions, for website, PC monitor displays and for offset press work.

### **Super-Speed USB3 Technology**

The technology used in Super-Speed scanning provides an image data transfer rate of 5 GB per second, ensuring high productivity for the most complex full color documents. Originals are imaged at maximum speed with no scanning slowdowns or pauses, as found in competitive scanning systems. Super-Speed scanning delivers full color, high speed imaging for the most demanding production environments.



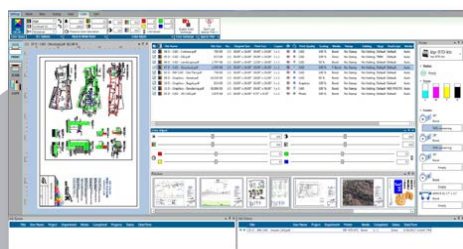
## Print Submission

# KIP ImagePro - Print

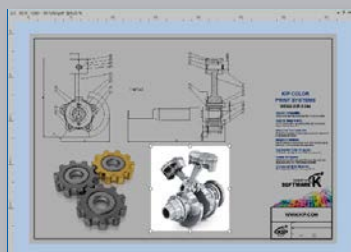
KIP ImagePro is a powerful suite of software that improves efficiency with controlled workflow automation in high demand environments while producing faster turn-around times. KIP ImagePro document submission tools are designed to enhance color management capabilities. Advance your workflows in an application for printing a range of color or black and white wide format documents including technical images, posters and banners to multiple KIP systems.

The brilliant multi-tasking flexibility allows production operators to capture efficiency, improving customer service with faster production fulfillment. A fully customizable interface enhances system tools by placing them forward for ease of access, navigation and control. It is not necessary to be a color expert to adjust and print color with KIP ImagePro. Simple presets for both graphic and technical documents provide easy operation for smarter color communication. Sophisticated project details can be highlighted with Advanced Area of Interest selections. KIP Smart Stacking simplifies the accurate collation of mixed sets of color and black and white prints. Intelligent Job Validation provides notification for missing fonts, correct page size and comprehensive multi-page control when printing PDF files. The Roll Preview interactively displays documents on the chosen roll width for nesting, paneling & two-up printing.

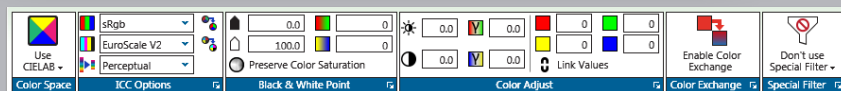
KIP Image Pro - Print has two interface modes: Standard, for features most commonly used and Expanded, additional tools designed for production experts. Using either mode, the ease to which KIP ImagePro integrates into print workflows is simply brilliant.



Powerful Job Creation, HD Viewer & System Monitoring



Area of Interest (AOI)



Professional Color Management

## KIP ImagePro - Print Key Features



Brilliant Multi-Tasking | KIP Smart Stacking | Advanced Area of Interest Printing | Intelligent PDF Job Validation | High Definition Viewing | Customizable Interface for Personalized View & Tools | Easy Deployment

### KIP ImagePro: Features



**Brilliant Multi-Tasking** Within the productive simplicity of one application - create multiple jobs | Adjust Colors | Review Changes | View Device Status | Color\*, B&W and Grayscale Printing | Automatic Color\*\*, Gray or B&W File Detection | Load and Save System Presets | KIP Secure Print | KIP Accounting Center Integration | KIP Cost Center Integration | KIP Smart Stacking

**High Definition Viewing** High resolution image pre-flight viewer for “What You See Is What You Print” to include review of color adjustments and preset creations | Color or B&W | View applied filters to include color adjustments, stamps, PS & GL settings | AOI Selection - Scale, Position, Print | Position Image on the Page | Page ruler | View Scale to Pixels or Fit to Screen | Image Navigator



**Advanced Area of Interest Printing** Select Size | Position | Print only the “Area of Interest” to enhance communication of sophisticated or important job details



**Customizable Interface** Access your preferred productivity features with ease using “Pop Out” tools and panels, regardless of Standard or Expanded mode.



**Job Matrix** Individual Set and Copy Count | Change File Order with Cut/Paste | Apply Presets to Selected Files or Entire Job | Advanced Multi-Page PDF Support | Drag-n-Drop Files or Folders from Cloud, Local, Network Drives and KIP Mailboxes | Banner Page for Set or Job | Select Print Stacking Location | Submit Job Paused for Hold & Release | KIP Secure Print with PIN or User Identification | Accounting selections to include Projects and Departments | Stamping | Print Quality Presets for Color, Grayscale and B&W Documents | Page Count | Page Size | Scale to Page | Scale to Page Width or Length | Scale to Maximum | Margin Controls | PDF and Postscript® Quality Preset | Fold Preset | Text and Graphic Stamp in Color or B&W | HPGL Pen Preset | Rotate/Mirror/Invert | Adjust Job Matrix Column Sizes and Position | Customize Matrix Columns for Content



**Preflight & Thumbnail Preview** Vertical or Horizontal Ribbon Style for Quick Preview | Preview in Color or B&W | Preview Orientation & Print Direction | Select Image for instant access in Matrix | Roll Preview | Preflight Nesting & Two-Up



**Folding** Automatic Title Block Detection | Automatic Fold Configuration | Customize Fold Presets



**Email Notifications** Enable - Job Notifications | Replenishment of Consumables | Receive Printer Status | Meter Notifications



**System Presets & Media Manager** Pre Defined & Fully Customizable | Preview Preset | PS & PDF Settings | HPGL Variables | Advanced Scaling | Stamps with Images & Text | Custom Page Sizes | Load Custom Media Profiles | Add new media and customize names



**Other Features** Auto Connect to KIP Printers | Auto Update using “Click Once” | Customize User Interface with “Pop Out” Tools and Panels | Auto-Hide, Float or Dock Panels | Enable PS/PDF, HPGL Pens, Print Quality Presets | View changes as they occur | Add Custom Page Sizes | Unlimited User Templates | Displayed Units in Inch or Metric | Multiple Languages

### KIP ImagePro: Expanded Features



**Job Matrix** Select Color Space | ICC Options | Black / White Point | Color Adjustments | Color Exchange | Sharpen & Smooth Tools | Nesting with 2-UP | Paneling | Technical Label

**Job Validation** Notification for - Missing PDF fonts | Correct Page Size | Missing Media Sizes | Missing Job Media Type | Comprehensive Multi-page Individual File Selection & Control



**Job Information** Job analyzation for page size counts, color to B&W along with projected print times.

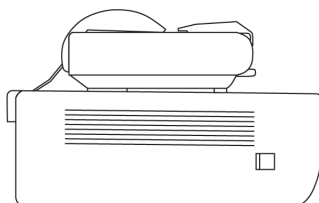
**Job Monitoring and Device Status** View Job Processing | Printing Status | Manage the Job to include Pause, Reorder or Delete | Recall, Edit and Reprint Previous Jobs

\*with KIP Color Printers

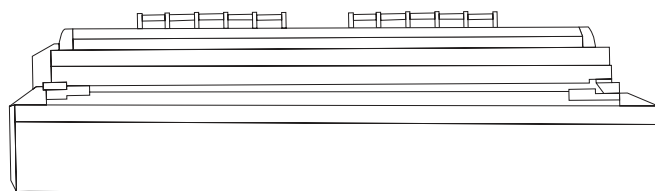
\*\*with KIP Color Printers. configured for this function

# KIP 2300 SPACE REQUIREMENTS

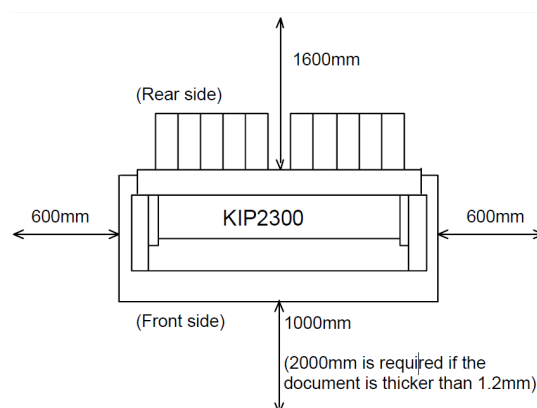
## KIP 2300 Scanning System Space Requirements



**KIP 2300 Side View**

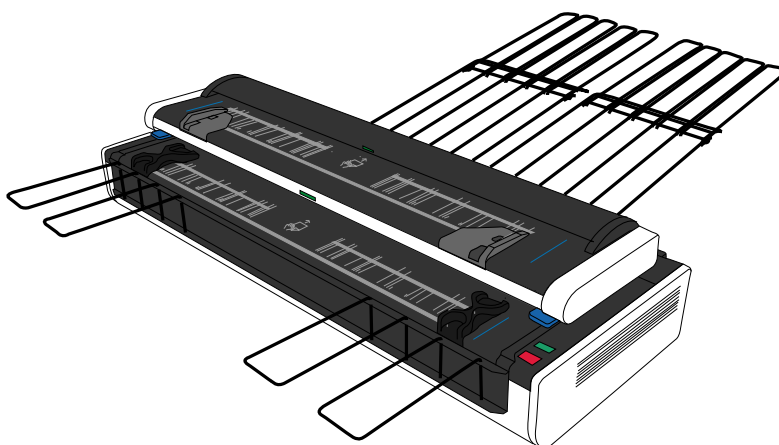


**KIP 2300 Front View**



**KIP 2300 Top View**

# KIP 2300 SPECIFICATIONS



General	
Scanner Type	C.C.D. with Super-Speed USB3 Technology and KIP RTT Technology
Scan Resolution	600 x 600 dpi optical resolution
Scan Speed	Up to 12 ips / 305 mm per second (B&W) Up to 6 ips / 152 mm per second (Color)
Scan Formats	TIFF, Multipage TIFF, PDF, PDF-A, Multipage PDF, DWF, Multipage DWF, JPEG, CALS
Scan Destination	Local USB (Removable Media), Unlimited IPS Mailboxes (Local), Unlimited FTP, Unlimited SMB
Original Size Width/Length	Originals Up to 42" - 36" / 1,066 mm - 914 mm Scan width
Original Thickness	Up to .6" / 16 mm Automatic thickness detection
Original Face Up/Face Down	Both - Dual Original Feed Tables
Interface	USB 3.0, Super-Speed USB3 Technology (5 GB per sec data transfer)
Dimensions	55" W x 21" D x 11" H / 1,399 mm W, 480 mm D, 310 mm H
Weight	160 lbs / 73 kg
Electrical	100-240V AC 50/60 Hz
Power Consumption	<120 W
Minimum PC Requirements (NOT INCLUDED WITH SCANNER)	Quad Core Processor ( such as an Intel i5 or higher ) Windows 10 8GB RAM 1 TB Hard Drive 1 Gig RJ45 LAN Port One USB 3.0 Port (scanner connection) 27" Wide Screen Flat panel monitor USB keyboard and mouse

