



**Wide Format Folding System  
Designed for**

KIP 770, 780, 790, 775, 785, 795 C SERIES

KIP 71, 75, 79 G SERIES

# KIPFold 1700





# KIPFOLD 1700

## Wide Format Document Folding System

The KIPFold 1700 compact design is perfect for small workgroup spaces. Expand document finishing capabilities with single click automated fan folding and stacking. Powerful online two-way integration produces professional folded documents ready for distribution.

## VERSATILITY

Gain folded packet versatility. Fan folded documents can be manually re-inserted to produce crisp cross folds to meet DIN, ANSI, or ARCH Standard Packet Sizes.

### **Fold with Confidence**

- High Build Quality
- Reliable Performance
- Unmatched Durability

## SAVE TIME & MONEY

The time saving efficiency of the KIP 1700 transforms intensive manual hand folding into automated cost reduction that keeps projects ahead of schedule.

## INTEGRATED CONVENIENCE

Single touch automation offers walk-up convenience to quickly complete folded document sets.

KIP System K Software applications and drivers provide a variety of advanced finishing options providing users power over fold styles as well as the ability to select individual folding parameters at the workstation and store them as presets for future use.

KIP certified drivers, job submission applications and browser based job tools feature full integration with KIPFold system features.



## SINGLE TOUCH AUTOMATION



**KIP Smart Touchscreen**



**AUTOMATION**



**EASE  
OF USE**



**PRECISE FOLDS**



**SMART  
TOUCHSCREEN**



**RELIABILITY**



**QUIET  
OPERATION**



**SAVES TIME**

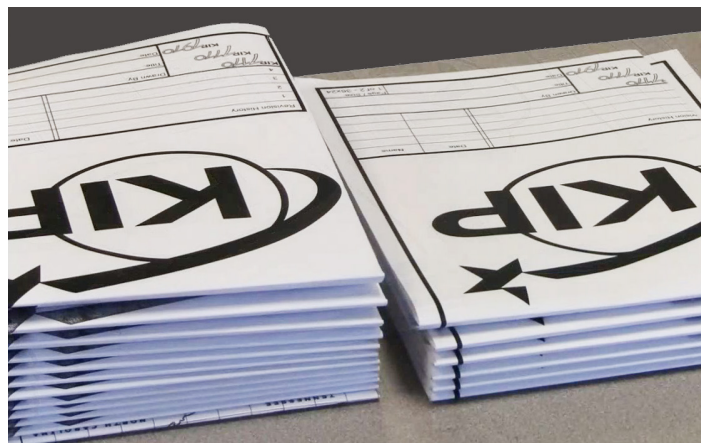
# KIP SYSTEM K SOFTWARE SYSTEM INTEGRATION

This unique integrated solution allows complete control of the folder and folding packets directly from all KIP Applications including the KIP Touchscreen, KIP ImagePro, KIP PrintPro.NET, KIP Windows and AutoCAD drivers.

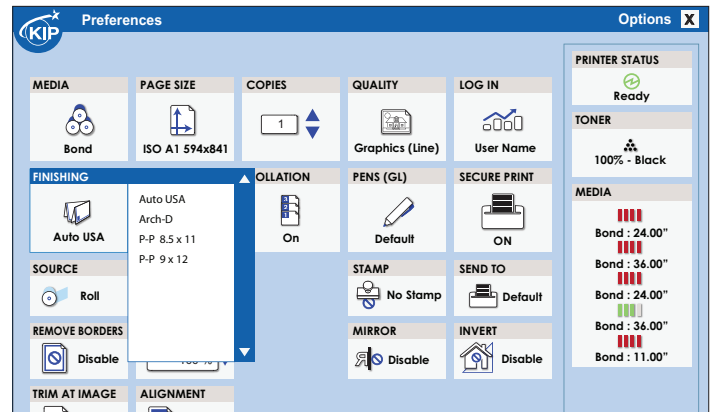
KIP System K Software allows all user levels to easily create and prepare prints for folding through the uniform software interface and application process.

## **KIPFold 1700 System K Software Features:**

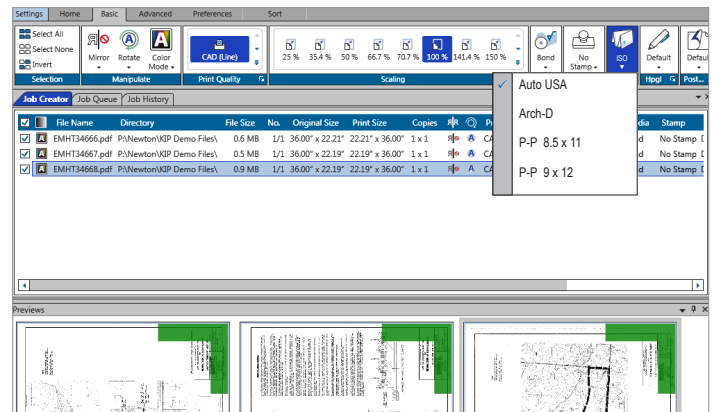
- Simplify custom folds with preset editor
- Title block position control
- Print submission via PC and print drivers
- System error reporting through email notification
- Intelligent job recovery for accurate print accounting



**Portrait Packet Styles**



**Windows Driver Fold Packet Selection**



**PC, Browser, and Driver Folder Control**





# KIPFOLD 1700

Wide Format Document Folding System

Technology	Microprocessor Controlled Fold Rollers with Color Touch Screen
Paper Feed	Online Automatic for Fanfold & Manual for Crossfold
Media Width	11" - 36" / 279 - 914 mm
Media Length	17" - 20' / 420 mm - 6 m
Media Types	Bond / Plain Paper
Media Weight	20 - 24 lb / 75 - 90 gsm
Fold Types	DIN, ANSI or ARCH packet sizes
Total Fold Programs	up to 255
Fan Fold Panel Sizes	6.7" - 9" / 170 - 230 mm (adjustable)
Fan Fold Margins	0" - 1.5" / 0 - 40 mm
Cross Fold Panel Sizes	10" - 12" / 250 - 320 mm (adjustable)
Fan Fold Stacking	up to 10
Cross Fold Stacking	Up to 5 (E / A0 packets)
Flat Stacking	The integrated front stacking print tray on the printer is used for flat stacking (fully integrated and automatically selected)
*Maximum fanfold panels with 20#/75gsm paper = 29	
*Maximum page size for cross fold function with 20#/75gsm paper = E / A0	

## COMPATIBLE KIP MODELS

The KIPFold 1700 system is compatible for full integration with the following KIP production systems:



### C Series

KIP 770, 780, 790, 775, 785, 795



### G Series

KIP 71 Series | 75 Series | 79 Series

[WWW.KIP.COM](http://WWW.KIP.COM) | 800.252.6793